

Products of



Bangladesh Jute Mills Corporation (BJMC)

(The Single Largest Manufacturer & Exporter of Jute Goods in the World)

BJMC AT A GLANCE

- The Jute Industry in Bangladesh took off in 1952.
- Bangladesh Jute Mills Corporation started his Journey in 1972.
- Bangladesh Jute Mills Corporation (BJMC) is the single largest manufacturer & exporter of jute goods in the world and fully owned by the Govt.
- BJMC have 26 mills under its control with a production capacity of 881 MT per day.
- BJMC is exporting about 1,50,000 MT of different kinds of jute products approximately more than 120 countries of the world.

Jute used by BJMC

- Three types of jute are generally used for producing jute goods. They are :
(1) White (2)Tossa (3) Mesta.
- Hessian, Sacking, CBC, Geo-Jute all fabrics are combination of white, Tossa & Mesta.



Products of BJMC

- Mineral Oil Treated (MOT)/Normal Hessian Cloths & bags.
- Mineral Oil Treated (MOT)/Normal Sacking Cloths & bags.
- Vegetable Oil Treated (VOT)/Food grade Hessian, Sacking Cloths & bags.
- CBC (Carpet Backing Cloths).
- Geo-Jute (Soil Saver).
- Yarn & Twine.
- Jute tape.
- Canvas cloth.
- Diversified Products.
- Finer Jute Fabric (FJF).
- Union Fabric.
- Sliver can sheet.
- Sliver can.
- Glass fiber products.

Exporting Approximately more than 120 Countries

USA	Srilanka	Newzeland
U.K	Canada	Japan
U.A.E	China	Jordan
Uganda	Costarica	Turkey
Iran	Cameron	Thailand
Italy	Greece	Bulgaria
Indonesia	Guinea	Belgium
India	Germany	Mexico
Sudan	France	Malaysia
Singapore	Kenya	Zimbabwe
Saudia Arabia	Australia	Lebanon
Syria	Nigeria	Russia
Spain	Nicaragua and others.	

Bjmc at a Glance/Jute used by BJMC/Products of Bjmc/Exporting Countries

Specification of Hessian Cloths

It is a plain woven cloth produced from single warp and weft of jute yarn. It is used for making bags and packing materials. Generally it is used in agro-based industries for packing rice, cotton, tobacco, coffee, potatoes, tea, onion, wheat and similar products. It is also used as nursery pots for seedlings.

Width	Weight	Porter & Shots	Packing
40"(101.60 cm)	6.5 ounce/yard	9 X 7	2000 yards/bale
40" (101.60 cm)	07 ounce/yard	9 X 8	2000 yards/ bale
40" (101.60 cm)	10 ounce/yard	11 X 12	2000 yards/bale
45" (114.30 cm)	09 ounce/yard	9 X 10	1000 yards/bale
45" (114.30 cm)	11 ounce/yard	11 X 12	1000 yards/bale

Specification of Hessian bags

Width	Length	Weight Per Bag	Porter & Shots	Ex- Fabric	Packing
20"	28"	6.03 ounce	9x8	40"-07 oz/40"	1000 bags/bale.
20"	28"	6.46 ounce	9x9	40"-7.5 oz/40"	1000 bags/bale.
14	34	7.32 ounce	11x12	34-10 oz/40	1000 bags/bale

Safety sewing optional: Hemmed at mouth, Herackle sewn side and bottom, Selvege Mouth
Color: Natural



Specification of Sacking bags

Sacking bags are used to pack food grain, sugar, fertilizer, cement etc. Generally it is used to pack heavy weight ranging from 50 to 100 kg. Different types of sacking bags are available known as B.Twill, Binola, D.W etc.

Sacking Bags	Length	Width	Weight per bag	Porter & shots	Packing	Note
B. Twill Jute Bag (VOT/MOT)	44 "	26.5"	2.25 pound (LBS)	6x8	Packed 300 bags/bale.	3 blue stripes
Binola Jute Bag (VOT/ MOT)	44"	26.5"	2.00 pound (LBS)	6x7	Packed 300 bag/ bale.	3 blue stripes
Heavy Cess Jute Bag	43"	29"	2.50 pound (LBS)	8 x9	Packed 300 bag/ bale.	2" Green stripes
Sugar Twill Jute Bag.	48"	26.5"	2.46 pound (LBS)	6 x 8	Packed 300 bag/ bale.	2" Red stripes
D.W Jute Bag	54"	27"	2.25 pound (LBS)	8 x 8	Packed 300 bag/ bale.	3 blue stripes

Various width, weight & quality are available based on buyer's specification.

Specification of CBC

Width	Weight	Porter & shots	Packing
150"	5.5 ounce per square/ yard.	9x8	600-900 yards per roll
150"	6 ounce per square/ yard.	10X10	600-900 yards per roll
150"	7 ounce per square/ yard.	13X10	600-900 yards per roll
150"	9 ounce per square/ yard.	15X13	600-900 yards per roll
203"	7 ounce per square/ yard.	13X10	600-900 yards per roll



Specification of Hessian Cloths/ Hessian Bags/ Sacking Bags/ CBC

Specification of Jute Geo Textiles

Jute nets are used for re-vegetation and soil-stabilization. The upper layer of the soil preserved from wind or water erosion by the establishment of geo-jute. Geo nets used as vegetation cover.

Geo-Jute	Width	Weight	Ends Per Dm Picks Per Dm	Packing
Soil Saver	48"	1.22/34.59 Pound/Ounce per yard	6.5x4.5	600/900 yards per bale & 75 yards per roll
DW Plain	39.37"	20.22 Ounce per yard	10 x 8	500 yards per bale
DW Plain	39.37"	23.35 Ounce per yard	11 x 10	500 yards per bale



Jute Export Yarn

These are widely used by carpet manufacturer and other users.

Yarn type	Ply	Count	Winding	Packing
CRM	1 to 3	6 to 16 pounds/Spyndle	Conical, Mack roll or Precision, Hanks	6 Spool/Trust 60 Kg/Bundle
CB	1 to 3	6 to 6 pounds/Spyndle	Conical, Mack roll or Precision, Hanks	6 Spool/Trust 60 Kg/Bundle



Specification of Finer Jute Fabric (FJF)

Finer fabric of jute used for making different types of diversified products like shopping bags, Fashion bags, Potteries, Bottle bags etc.

Quality	Width	Weight Per yard	Porter & shots	Packing
Natural	56"	7.36 oz	15x15	500 yards per roll
Bleached	56"	7.36 oz	15x15	100 yards per Pack
Dyed	56"	7.36 oz	15x15	100 yards per Pack

It can be produced with or without lamination.



Specification of Union Fabric

Jute fabric produced warp in cotton & weft in jute is known as union fabric. It is used for making different fashionable bags, pillow cover, Blazer etc.

Quality	Width	Weight Per yard	Porter & shots	Packing
Natural	50"	11.16 oz	44x18	100 yards per Pack
Bleached	50"	11.16 oz	44x18	100 yards per Pack
Colored	50"	11.16 oz	44x18	100 yards per Pack



Specification of Union Canvas

Jute fabric produced warp in cotton & weft in jute is known as union canvas. It is used for making different fashionable bags, file cover, seat cover etc.

Quality	Width	Weight Per yard	Porter & shots	Packing
Natural	50"	16 oz	44x18	100 yards/ Pack
Bleached	50"	16 oz	44x18	100 yards/Pack
Colored	50"	16 oz	44x18	100 yards/Pack



Jute Tape

Jute tape is made from CBC & Hessian yarn using for belt, wrapping trees & other purposes.

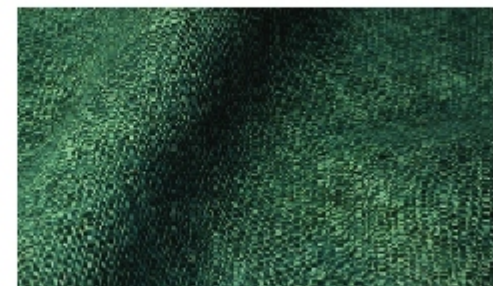
Width	Length	Weight per Roll	Packing
1" x 3.5"	72 Yards/Roll	5-22 Lbs	50-100 Rolls/Pack



Rot Proof With Copper Treatment

Use to prepare nursery pot & wrapping to save the tree.

Width	Weight	Porter & Shots	Packing
40"	10 OZ/Yards	11 x 12	1000-2000 Yards/Bale



Jute Felt :

Jute felt is a matted fabric of compressed fibers. It is made of 100% jute fiber. It is being increasingly used for an excellent industrial insulation, acoustic materials and packing to protect valuable things from scratch mark. It is also used to protect trees from snow, using for landscaping, using in tree nursery field for filtration and control of erosion.

Jute Felt	Width	Length	Thickness	Weight	Packing
S.S Felt	54"	25 Meter	5 mm.	31.66 Kg/Pcs	As per requirement
D.S Felt	54"	25 Meter	7 mm.	46.41 Kg/Pcs	As per requirement



Jute Blanket

Jute blanket is a matted fabric of compressed fibre. Jute blanket is made from 100% jute fibre. It is used as warm cloths for human being.

Width	Length	Thickness	Weight	Packing
54"	90"	4 – 7 mm.	2.27 Kg/Pcs	As per requirement



Diversified Products

Traditionally jute is used to manufacture packaging materials like hessian, sacking, ropes, twines, carpet backing cloth (CBC) etc.

New, alternative and non-traditional use of jute is generally termed as Diversified Jute Products.



JUTE SHOPPING BAG



JUTE FASHION BAG



JUTE & WOOL BLENDED COAT



JUTE CALENDAR



JUTE FASHION BAG



JUTE FASHION BAG



JUTE OFFICE FILE



JUTE TISSUE BOX



JUTE JOURNEY BAG



JUTE SHOPPING BAG

Non-Jute Products

Glass Fiber:

The Products are made from jute with resin and other chemicals where performance characteristics match that of wood-made ones. The jute reinforced fibre products are not affected by mites, water or moisture and generally fire retardant and chemical-proof. The jute fibre products hardly require any maintenance. Various products can be made as per buyers design and choice.

Juto fibre glass industries. Tarabo, Rupganj, Narayangonj, Dhaka.

Project Head : +880173-0798043



Sliver Can Sheet

All jute mills under BJMC usages sliver sheet for making sliver can which used in drawing & spinning frame.

Width	Length	Weight	Packing
6"	9"	72 Grams	As per requirement



Sliver Can

All jute mills under BJMC usages sliver can for drawing & spinning frame.

Dia	Length	Use
12"- 18"	40"	For Drawing & Spn.Frame



Plastic Bobbin

All jute mills under BJMC usages plastic bobbin in spinning frame.

Size	Use
4.25 to 7.50	For Spinning Frame



BJMC Mills

BJMC 100% own of Government is managed by a Board of Directors Headed by the Chairman. Now the organization is operating 26 mills (including 3 non jute industries). There are 7 mills in Dhaka zone, 10 mills in Chittagong and 9 mills in Khulna zone.

SL. No	Dhaka Zone	Monthly production capacity (in M.Ton)		
		Hesseian	Sacking	CBC & Others
1.	Latif Bawany Jute Mills Ltd.	456	1188	451.25
2.	Karim Jute Mills Ltd.	159.5	972	72
3.	Bangladesh Jute Mills Ltd.	293	975.5	0
4.	Rajshahi Jute Mills Ltd.	118.75	432	0
5.	UMC Jute Mills Ltd.	270	1458	0
6.	Jatio Jute Mills Ltd.	264	864	66.5

Chittagong Zone				
1.	Hafiz Jute Mills Ltd.	474	738	0
2.	Amin Jute Mills Ltd.	246	928.75	327.25
3.	Gul Ahmed Jute Mills Ltd.	159.5	453.75	138.5
4.	R.R Jute Mills Ltd.	0	0	213
5.	M.M Jute Mills Ltd.	0	0	213
6.	K.F.D Jute Mills Ltd.	0	0	542
7.	Baghdad-Dhaka Carpet Factory	0	0	150

SL. No	Khulna Zone	Monthly production capacity (in M.Ton)		
		Hesseian	Sacking	CBC & Others
1	Crescent Jute Mills Co. Ltd.	793.25	1224	210.5
2	Khalishpur Jute Mills Ltd.	372	1116	159.75
3	Platinum Jubilee Jute Mills Ltd.	554.25	1069.25	165.25
4	Star Jute Mills Ltd.	431	705.5	0
5	Eastern Jute Mills Ltd.	123.5	414	62.75
6	Aleem Jute Mills Ltd.	135.75	334.75	0
7	Jessore Jute Industries Ltd.	290.25	396	112
8	Carpeting Jute Mills Ltd.	0	0	233.75
9	Daulatpur Jute Mills Ltd.	84	414	0

SL. No	Non-Jute Mills	Spares
1.	Mills Furnishing Ltd.	3500 Pcs Different spares.
2.	Gulfra Habib Ltd.	32.50 M.Ton
3.	Jute fibre glass Industries.	As per buyer demands.
4.	Monwar Jute Mills Ltd.	Under processed for opening

Total Production Capacity of BJMC

Production capacity Per Day	881.00 M. Ton
Production Capacity (Month of 25 Working)	22,025.75 M. Ton
Production Capacity (Year of 300 Working Days)	2, 64,309.00 M. Ton



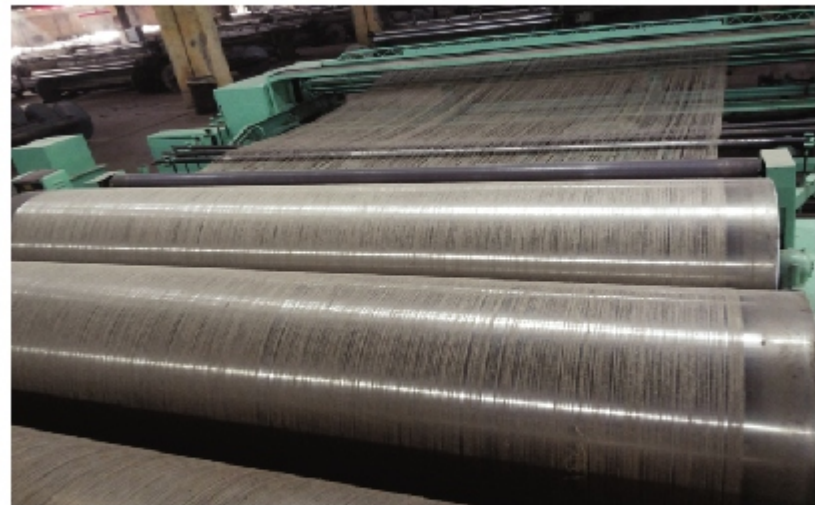
Process of Selling

- A) Enquiry comes from buyer.
- B) BJMC offers the price if price is acceptable then allocation departments confirms mill wise quantity & Send Proforma Invoice (P.I.) to buyer.
- C) Buyer open Letter of Credit (L/C) or send T.T. to BJMC.
- D) BJMC Issues Documentary Instruction (D.I.). One copy send to Mill for starting production and another copy to buyer.
- E) After completion of production BJMC arrange shipment.

Documents for Shipment

We prepare following documents for shipment:

- a) Invoice
- b) Bill of Lading (BL)
- c) Certificate of Origin.
- d) Packing List.
- e) Additional documents as per buyer requirements.



Terms & conditions to export

Interpretation: Ensure Quality Jute Product.

Price : According to authoritative approval Price list.

Order : A purchaser can send his order by e-mail , Fax, Web site or apparently.

Payment : The complete payment of the order required before expedition in BJMC' Bank Account.

Mode of Payment : Telegraphic Transfer (T.T), Letter of Credit (L/C), Cash Against Document (CAD).

Sales term : Free On Board (FOB), Cost & Freight (CFR), Cost, Insurance & Freight (CIF).

Shipping : Depends on Sales Terms.

1) FOB : Vessel to be nominated by buyer and BJMC's responsibility to deliver the goods from Mills to Chittagong Port.



Continued

2) CFR : Vessel to be nominated by seller (BJMC) to deliver the goods from Mills to destination port container yard.

3) CIF : Vessel to be nominated by seller (BJMC) to deliver the goods from Mills to destination port container yard along with Insurance coverage.

Delivery : According to buyers requirements.

Events Outside of Our Control (Force Majeure): That, neither the Agent nor the Principal shall be considered in default for the causes or affects which may arise out of 'Force -Majeure' situation likes- Act of Allah/ God, War, Hostilities, Invasion, Act of forcing enemies, Rebellion, Revolution, Insurrection, Civil War and/or Riot, Strike, Lock out, Political unrest, Commotion, Disorder etc. or the like which will be beyond the control of Principal or any other reason falling under the meaning of the "Force Majeure".



Say Yes To Jute !



Jute is a natural Fiber. It is affordable, fashionable, bio-degradable, reusable, versatile and free from health hazards.

So, use jute & Save the earth.

Bangladesh Jute Mills Corporation (BJMC)

Adamjee Court (Annex-1), 115-120, Motijheel C/A, Dhaka-1000, Bangladesh
Tel:(+880-2) 9558192-96, 9558182-86, 9565517, Fax : (+880-2) 9567508, 9564740
E-mail:bjmc.bd@gmail.com, Website:www.bjmc.gov.bd